



## LED TUBE D-2 Series



Modell Model	Leistung Power	Lumen Lumen	Verdunklung DIM	Produktgröße Product size
LPTL18D04	• 18W	1530LM	N	∅ 600x63x37mm
LPTL36D04	• 36W	3100LM	N	∅ 1200x63x37mm
LPTL45D04	• 45W	4050LM	N	∅ 1500x63x37mm



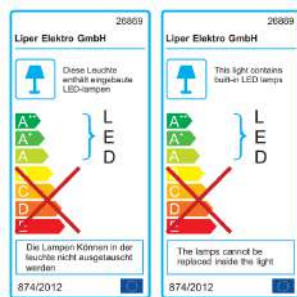
## LED TUBE D-2 Series



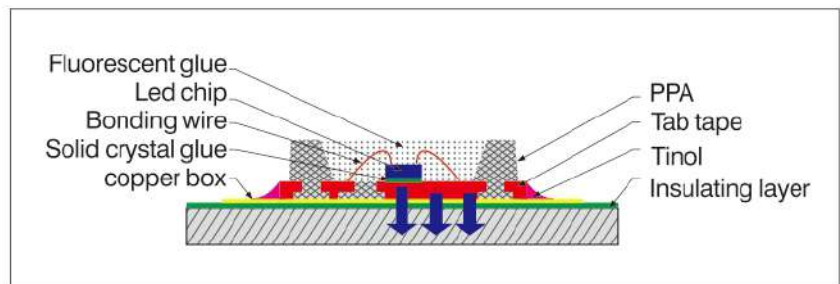
### Product Overview

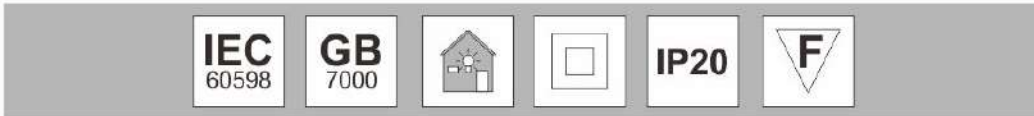
Energy efficiency class	A+
PF	>0.5
CCT(K)	3000-4000-6500 K
CRI(Ra)	>80
Voltage (V)	220-240 V
Frequency(Hz)	50/60Hz
Lifespan (hrs)	30000/100000 Switching Cycles
Working Temperature ( C )	-15-45
Storage Temperature ( C )	-15-45

### Energy Label



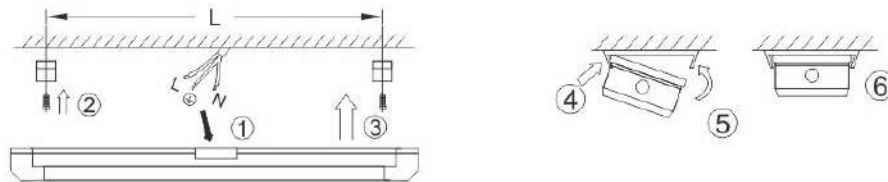
### SMD breakdown drawing



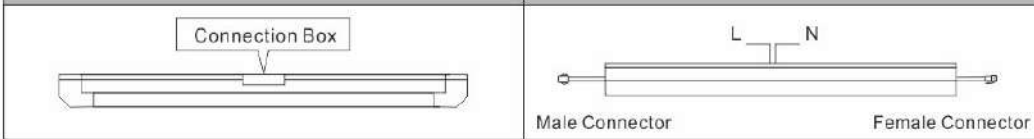


### BATTEN MOUNTING

Installation ceiling or wall through mounting clips.



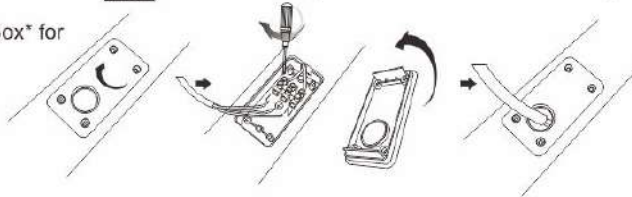
<b>Product Type One (General Purpose)</b>	<b>Product Type Two (Modeling Purpose)</b>
---	--



### 1 WIRE CONNECTION

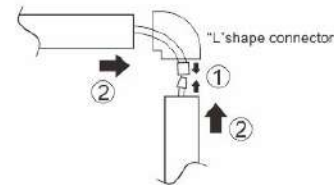
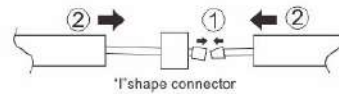
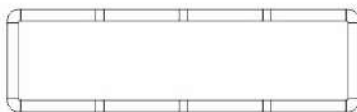
\*Notice: Cut off power source before installing!

Using wire connection Box\* for power connection.

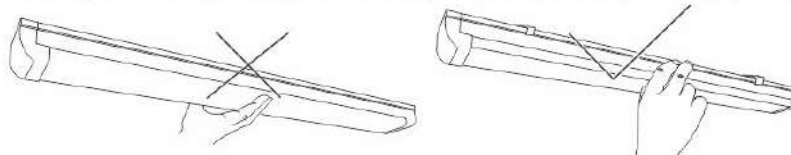


### 2 TRUNKING METHOD

Click fit male plug part into female socket. Affix next system only after linking. Maximum amount of linking: 10pcs



1. Please switch off the power supply before changing the product or connection!
2. Max current of power cable: 2A
3. This product is designed only for indoor use, please do not use it anywhere humid, wet or outdoor.



Based on actual product purchased